

## **LIFT STATION NO. 2 REPLACEMENT**

City Bid No. 1920-07  
Jones Edmunds Project No. 09803-036-01

### **ADDENDUM NO. 1**

July 10, 2020

---

**BIDS DUE: 2:00 PM, Local Time, July 29, 2020**

---

TO ALL CONTRACTORS BIDDING ON THIS PROJECT:

The changes, additions, substitutions, and/or deletions contained in Addendum No. 1 are hereby made part of the Contract Documents fully and completely for the construction of Lift Station No. 2 Replacement, City Bid No, 1920-07, Jones Edmunds & Associates, Inc., Project No. 09803-036-01, for the City of Jacksonville Beach, Florida, dated July 1, 2020.

DRAWINGS – Dwg. No. C3, Lift Station No. 2 Proposed Site Plan  
Dwg. No. M2, Lift Station No. 2 Sections  
Dwg. No. E5, Electrical Site Plan

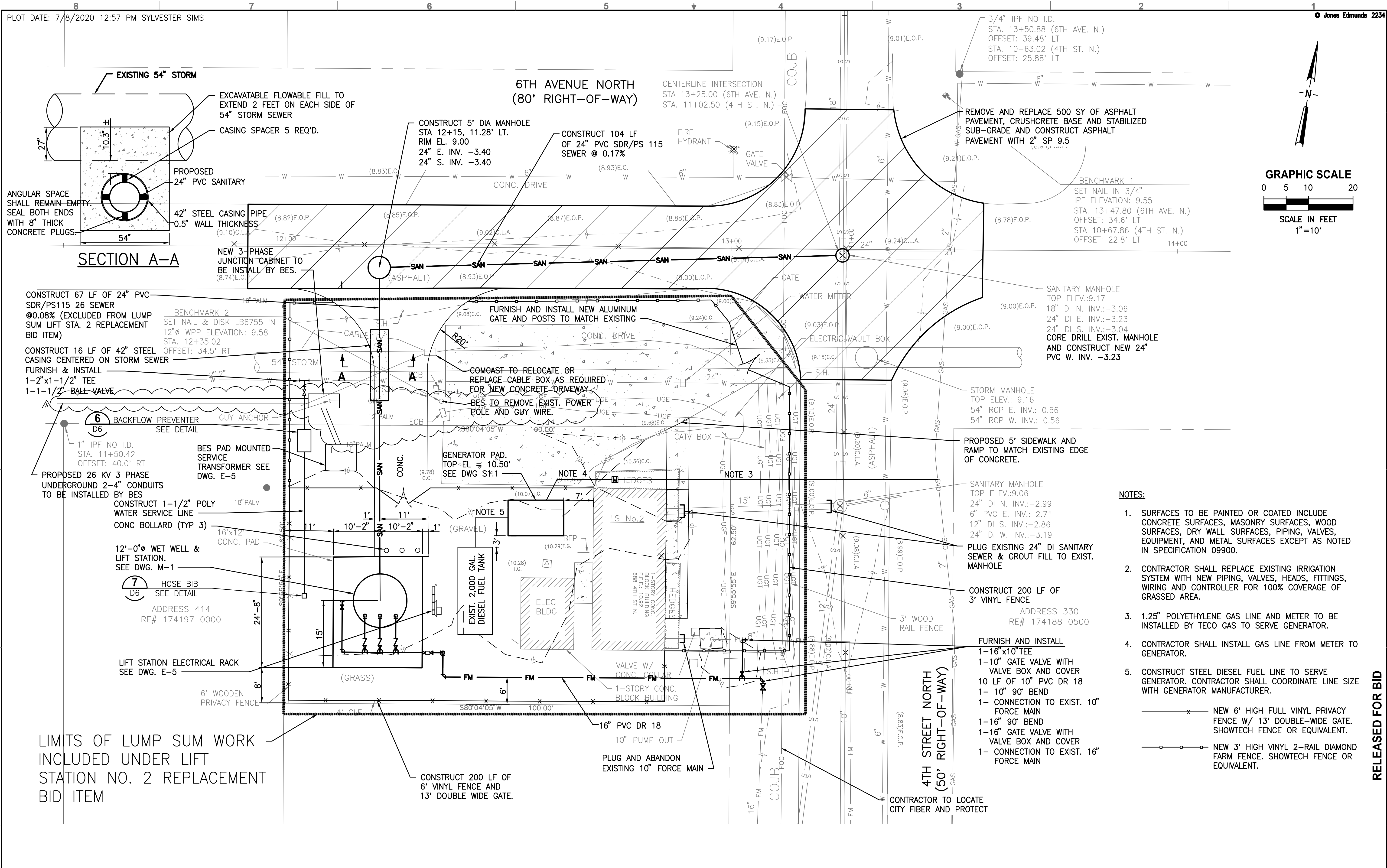
**Revisions:**

Dwg. No. C3 is revised to show the revised plan by Beaches Energy Services to remove the existing power pole and guy wire and install a new underground service and three phase junction cabinet.

Dwg. No. M2 is revised to show the base slab of the proposed new wetwell as a precast concrete structure.

Dwg No. E5 is revised to show the proposed installation of new underground primary service conduits from the new junction cabinet to the new electrical service transformer and revise Notes 4 and 5 accordingly.

END OF ADDENDUM



**SECTION A-A**

**NOTES:**

1. SURFACES TO BE PAINTED OR COATED INCLUDE CONCRETE SURFACES, MASONRY SURFACES, WOOD SURFACES, DRY WALL SURFACES, PIPING, VALVES, EQUIPMENT, AND METAL SURFACES EXCEPT AS NOTED IN SPECIFICATION 09900.
  2. CONTRACTOR SHALL REPLACE EXISTING IRRIGATION SYSTEM WITH NEW PIPING, VALVES, HEADS, FITTINGS, WIRING AND CONTROLLER FOR 100% COVERAGE OF GRASSED AREA.
  3. 1.25" POLYETHYLENE GAS LINE AND METER TO BE INSTALLED BY TECO GAS TO SERVE GENERATOR.
  4. CONTRACTOR SHALL INSTALL GAS LINE FROM METER TO GENERATOR.
  5. CONSTRUCT STEEL DIESEL FUEL LINE TO SERVE GENERATOR. CONTRACTOR SHALL COORDINATE LINE SIZE WITH GENERATOR MANUFACTURER.
- NEW 6' HIGH FULL VINYL PRIVACY FENCE W/ 13' DOUBLE-WIDE GATE. SHOWTECH FENCE OR EQUIVALENT.  
 NEW 3' HIGH VINYL 2-RAIL DIAMOND FARM FENCE. SHOWTECH FENCE OR EQUIVALENT.

LIMITS OF LUMP SUM WORK INCLUDED UNDER LIFT STATION NO. 2 REPLACEMENT BID ITEM

RELEASED FOR BID

LAST SAVED: 7/8/2020 12:56 PM SSIMS DWG LOCATION: X:\09803-JACKSONVILLE BEACH\PROJECTS\036-01 LS #2\CAD\CONTRACT DRAWINGS\CIVIL\09803036-C03.DWG

DESIGNED	BHEPBURN			
DRAWN	KPEREZ			
CHECKED	HBRIDGES			
LTR.	DATE	REVISIONS	BY	APPRD.
	7/7/20	ADDENDUM NO. 1	KAF	HRB

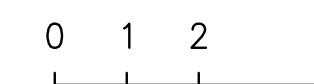
**Jones Edmunds**  
 CERTIFICATE OF AUTHORIZATION #1841  
 730 NE WALDO ROAD, GAINESVILLE, FLORIDA 32641 / (352) 377-5821  
 8657 BAYPINE ROAD SUITE 300, JACKSONVILLE, FL 32256 / (904) 744-5401

**LIFT STATION NO. 2 REPLACEMENT  
 JACKSONVILLE BEACH, FLORIDA**

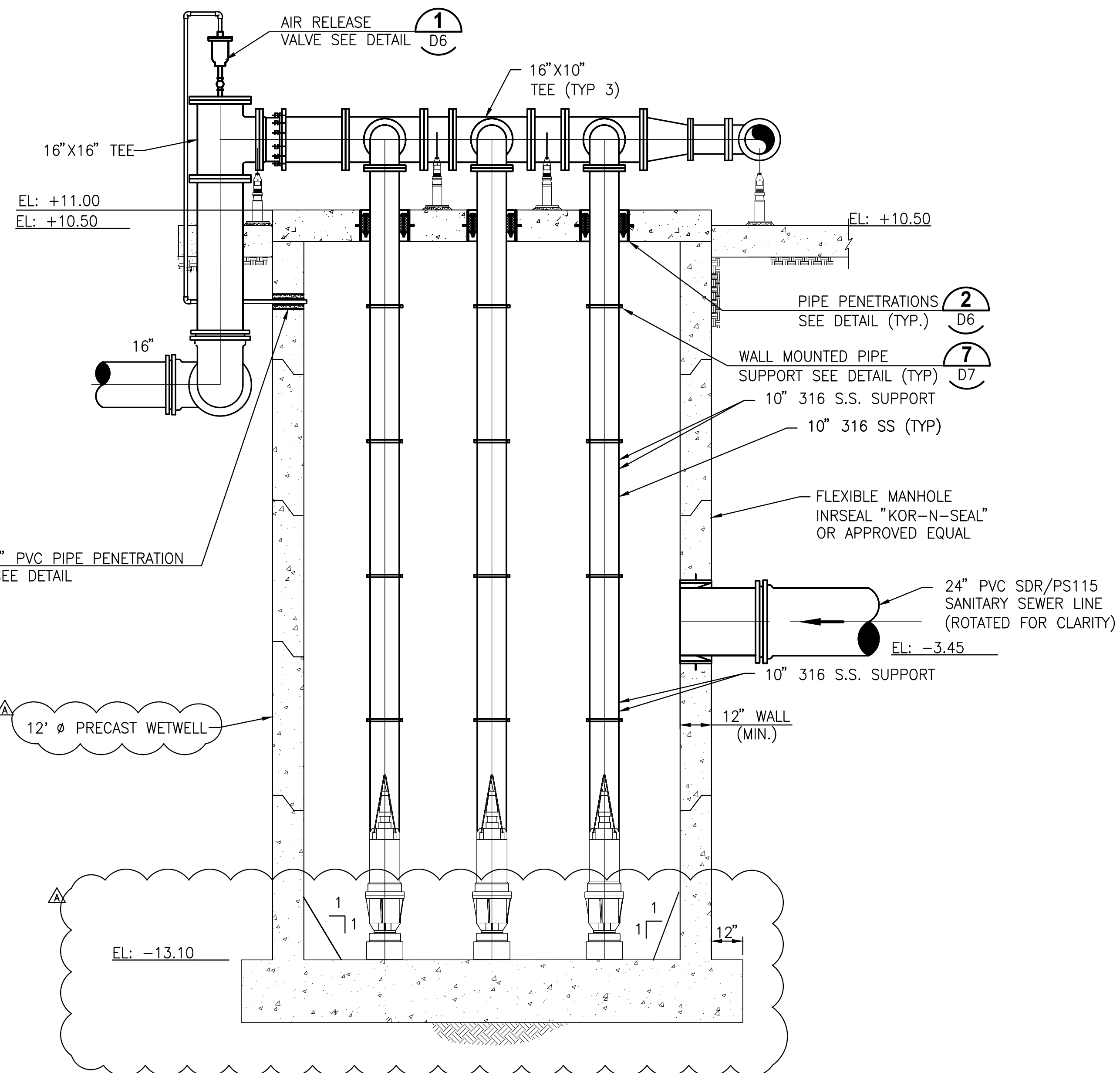
**LIFT STATION NO. 2 PROPOSED SITE  
 PLAN**

CERTIFICATE OF AUTHORIZATION #1841 APPROVED BY	DATE JUNE 2020	PROJECT NO. 09803-036-01
HAROLD R. BRIDGES, PE P.E. #22016	SCALE 1"=10'	DWG. NO. C3

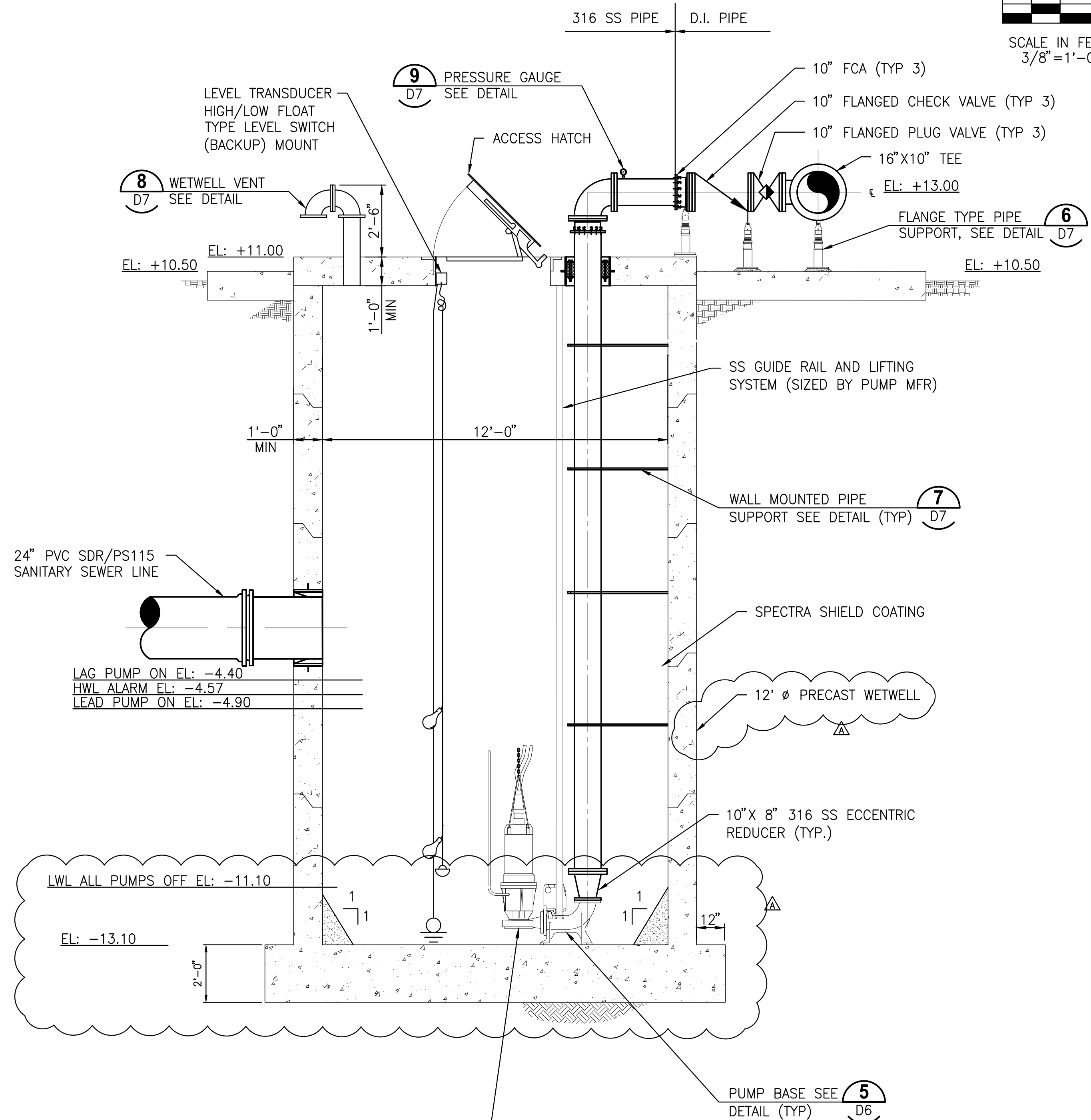
GRAPHIC SCALE



SCALE IN FEET  
3/8" = 1'-0"



SECTION A  
3/8" = 1'-0" M1



SECTION B  
3/8" = 1'-0" M1

PUMP MOUNTING, INCLUDING THE PEDESTAL AND SUPPORT, SHALL BE PER PUMP MANUFACTURER'S RECOMMENDATIONS

RELEASED FOR BID

LAST SAVED: 7/7/2020 1:14 PM SSIMS DWG LOCATION: Y:\09803-JACKSONVILLE BEACH\PROJECTS\036-01 LS #2\CAD\CONTRACT DRAWINGS\MECH\09803036-M02.DWG

DESIGNED	BHEPBURN		
DRAWN	KPEREZ		
CHECKED	HBRIDGES		
LTR.	DATE	REVISIONS	BY APPRD.
	7/7/20	ADDENDUM NO. 1	KAF HRB



CERTIFICATE OF AUTHORIZATION #1841  
730 NE WALDO ROAD, GAINESVILLE, FLORIDA 32641 / (352) 377-5821  
8657 BAYPINE ROAD SUITE 300, JACKSONVILLE, FL 32256 / (904) 744-5401

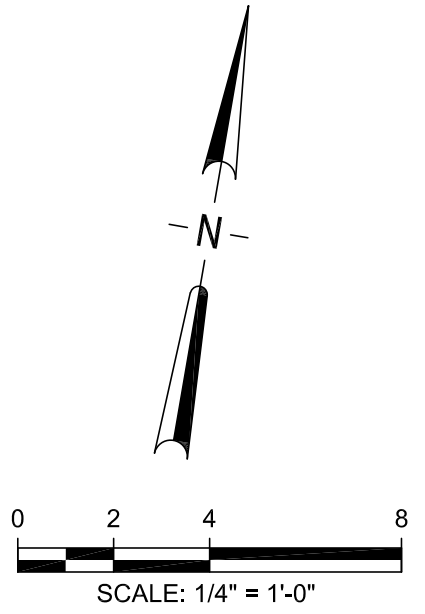
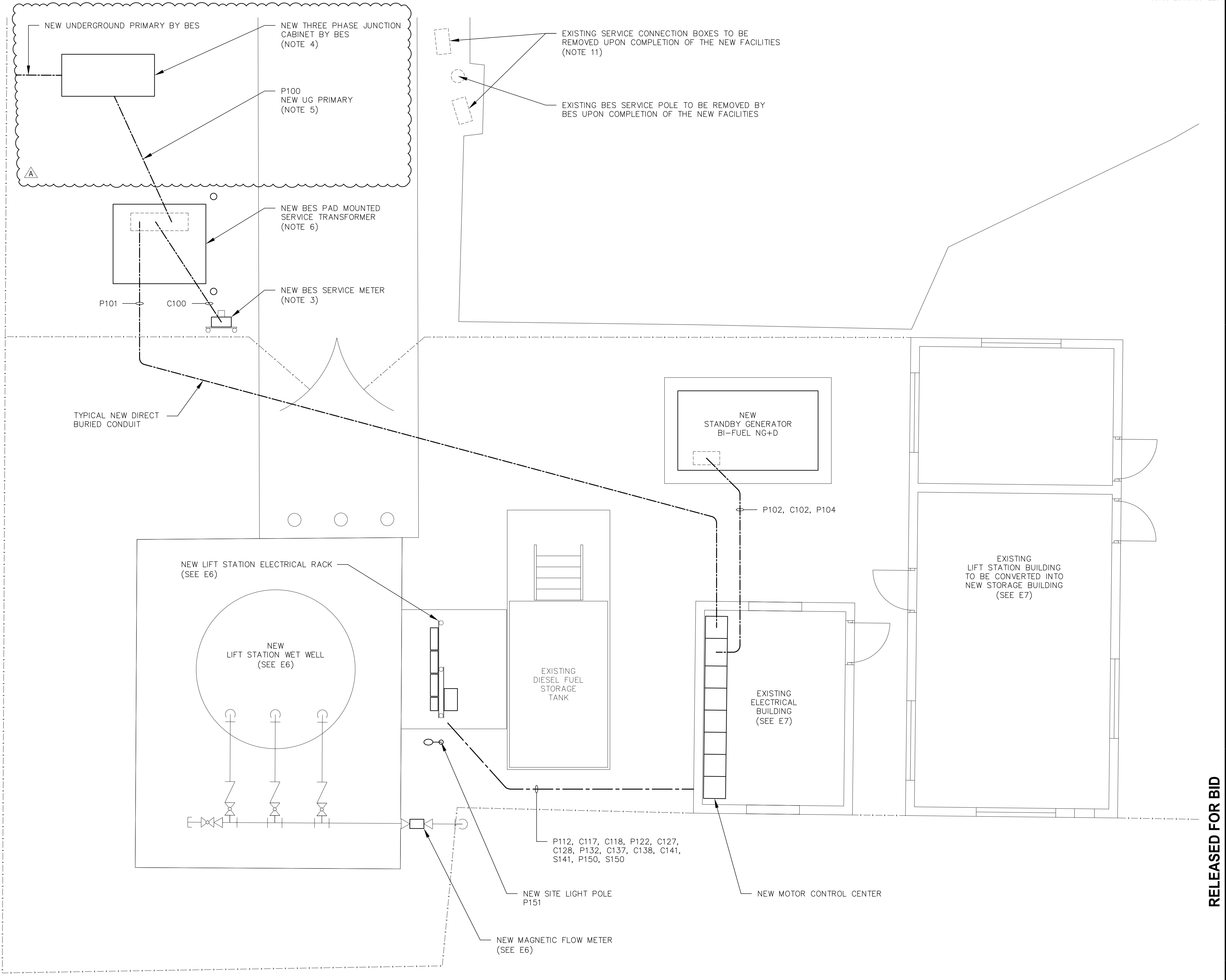
LIFT STATION NO. 2 REPLACEMENT  
JACKSONVILLE BEACH, FLORIDA

LIFT STATION NO. 2 SECTIONS

CERTIFICATE OF AUTHORIZATION #1841 APPROVED BY	DATE JUNE 2020	PROJECT NO. 09803-036-01
HAROLD R. BRIDGES, PE P.E. #22016	SCALE 3/8" = 1'-0"	DWG. NO. M2

NOTES:

1. THE CONTRACTOR SHALL INSPECT THE SITE PRIOR TO BID TO EVALUATE EXISTING CONDITIONS. INSTALLATION OF THE NEW FACILITIES WILL REQUIRE FIELD COORDINATION WITH PLANT OPERATIONS TO PERMIT MAINTENANCE OF OPERATION DURING CONSTRUCTION. DURATION OF POWER OUTAGES SHALL BE MINIMUM REQUIRED FOR SAFE INSTALLATION AND SHALL BE SCHEDULED WITH AND APPROVED BY THE OWNER.
2. THE CONTRACTOR SHALL TAKE PRECAUTIONS TO AVOID EXISTING UNDERGROUND UTILITIES INCLUDING PROCESS PIPING, WATER LINES, FUEL PIPING, ELECTRICAL CONDUITS, TELEPHONE, ETC. HAND EXCAVATION SHALL BE REQUIRED IN CONGESTED AREAS WHERE THE EXACT LOCATION OF ALL UTILITIES IS UNKNOWN AND SURFACE LOCATION IS NOT PRACTICAL. LOCATIONS SHOWN FOR THE EXISTING UNDERGROUND UTILITIES ARE APPROXIMATE ONLY. NOT ALL OF THE EXISTING UNDERGROUND UTILITIES ARE SHOWN. FIELD ADJUST LOCATIONS OF THE NEW FACILITIES TO ACCOMMODATE THE EXISTING SITE CONDITIONS AND UNDERGROUND UTILITIES.
3. PROVIDE NEW ELECTRICAL SERVICE IN ACCORDANCE WITH ALL BEACHES ENERGY SERVICES (BES) POWER UTILITY COMPANY REQUIREMENTS, INCLUDING NEW SERVICE METERING, METER ENCLOSURE, METER MOUNTING SYSTEM, ETC.
4. BES SHALL PROVIDE NEW THREE PHASE JUNCTION CABINET.
5. THE CONTRACTOR SHALL PROVIDE NEW UNDERGROUND PRIMARY SERVICE CONDUITS FROM THE NEW JUNCTION CABINET TO THE NEW ELECTRICAL SERVICE TRANSFORMER IN ACCORDANCE WITH ALL BEACHES ENERGY SERVICES REQUIREMENTS. BEACHES ENERGY SERVICES SHALL PROVIDE THE PRIMARY SERVICE CONDUITS. NEW UNDERGROUND PRIMARY SERVICE CONDUITS SHALL BE 2-4" SCH 40 PVC, LONG RADIUS GRS ELLS, MIN. 48" COVER.
6. THE NEW ELECTRICAL SERVICE PAD MOUNTED TRANSFORMER SHALL BE PROVIDED BY BEACHES ENERGY SERVICES. THE CONTRACTOR SHALL PROVIDE PRE-CAST TRANSFORMER PAD, AND BOLLARDS, IN ACCORDANCE WITH BEACHES ENERGY SERVICES REQUIREMENTS. SEE DETAIL ON EX.
7. THE CONTRACTOR SHALL PROVIDE FOUR NEW PAD MOUNTED TRANSFORMER SECONDARY CONNECTORS PER BEACHES ENERGY SERVICES REQUIREMENTS.
8. PRIOR TO BEGINNING WORK, THE CONTRACTOR SHALL CONTACT RICHARD LANGSTON WITH BEACHES ENERGY SERVICES AT (904) 574-0743 TO SCHEDULE AN ON SITE PRE-CONSTRUCTION MEETING.
9. THE CONTRACTOR SHALL CONTACT CHARLES BULLOCK WITH BEACHES ENERGY SERVICES METER SHOP AT (904) 247-6287 REGARDING SERVICE METERING REQUIREMENTS.
10. SEE BEACHES ENERGY SERVICES "PROCEDURES MANUAL FOR ELECTRIC SERVICE" FOR ADDITIONAL REQUIREMENTS.
11. UPON COMPLETION OF THE NEW FACILITIES, DISCONNECT AND REMOVE THE EXISTING SERVICE ENTRANCE CONDUCTORS FROM EACH SERVICE CONNECTION BOX TO THE EXISTING MAIN BREAKER. CUT OFF AND CAP EXISTING CONDUITS AT 24" BELOW GRADE.
12. ALL EXTERIOR MATERIAL AND INSTALLATION SHALL BE SUITABLE FOR AND IN ACCORDANCE WITH THE SPECIFICATIONS FOR "CORROSIVE ATMOSPHERES".
13. SITE LIGHT: FIBERGLASS DIRECT BURIED LIGHT POLE WITH BLACK FINISH, 10' LUMINAIRE MOUNTING HEIGHT, TYPE GFI DUPLEX RECEPTACLE FESTOON OUTLET AT 2' ABOVE GRADE, AND LIGHT SWITCH FESTOON OUTLET AT 4' ABOVE GRADE. LUMINAIRE SHALL BE AEL LNH2-LED-LU5-MVOLT-R5-BA AREA LIGHT FIXTURE. BRACKET ARM SHALL BE 24" LONG ALUMINUM SPOKE ARM BRACKET. PROVIDE 120V POWER TO THE POLE FROM THE LIGHTING PANEL (3/4"C, 3#12).
14. GLAND TYPE CONDUIT CABLE SEALS (ROXTEC RG M63 AISI 316L) SHALL BE USED FOR EACH CONDUIT CONNECTION TO THE TYPE Ex TERMINAL BOXES AND PUMP CONTROL PANEL. PROVIDE A MINIMUM OF 1" OF EXPOSED THREAD INSIDE THE ENCLOSURES TO FACILITATE INSTALLATION OF THE SEALS.



RELEASED FOR BID

DESIGNED	DLASSETTER
DRAWN	KPEREZ
CHECKED	HBRIDGES
BY	APPRD.
LTR.	DATE
	REVISIONS

DATE	7/7/20	DESCRIPTION	ELECTRICAL SERVICE REVISIONS
BY	DL	JE	

**JonesEdmunds**  
 CERTIFICATE OF AUTHORIZATION #1841  
 730 NE WALDO ROAD, GAINESVILLE, FLORIDA 32641 / (352) 377-5821  
 8657 BAYPINE ROAD SUITE 300, JACKSONVILLE, FL 32256 / (904) 744-5401

**LIFT STATION NO. 2 REPLACEMENT  
 JACKSONVILLE BEACH, FLORIDA**

**ELECTRICAL SITE PLAN**

APPROVED BY	DATE	PROJECT NO.
W. DAVID LASSETTER, PE	APR 2020	09803-036-01
P.E. # 37971	SCALE	DWG. NO.
		E5

LAST SAVED: 4/29/2020 4:51 PM DAVID DWG LOCATION: D:\DOCUMENTS\BUSINESS\JONES EDMUNDS\MAX BEACH\LIFT STATION 2\DRAWINGS\DWGS WDL\831P4\831E00P4.DWG